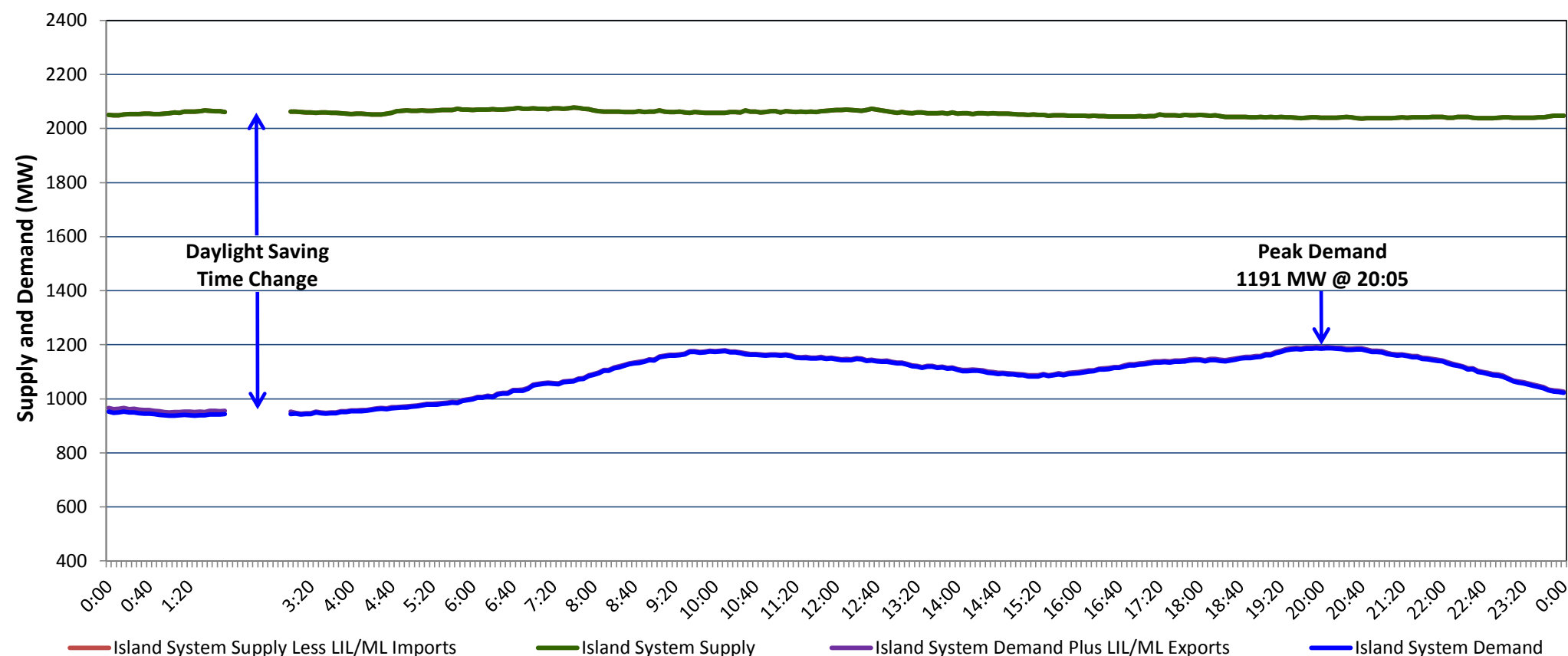


Newfoundland Labrador Hydro (NLH) Supply and Demand Status Report Filed Monday, March 15, 2021

Section 1 Island Interconnected System Supply, Demand & Exports Actual 24 Hour System Performance For Sunday, March 14, 2021



Supply Notes For March 14, 2021

1,2

Section 2 Island Interconnected Supply and Demand

Mon, Mar 15, 2021	Island System Outlook ³		Seven-Day Forecast	Temperature (°C)		Island System Daily Peak Demand (MW)	
				Morning	Evening	Forecast	Adjusted ⁷
Available Island System Supply: ⁵	2,040	MW	Monday, March 15, 2021	-3	-3	1,305	1,202
NLH Island Generation: ⁴	1,695	MW	Tuesday, March 16, 2021	-5	-4	1,335	1,232
NLH Island Power Purchases: ⁶	105	MW	Wednesday, March 17, 2021	-6	-6	1,335	1,232
Other Island Generation:	240	MW	Thursday, March 18, 2021	-2	-2	1,215	1,113
ML/LIL Imports:	-	MW	Friday, March 19, 2021	2	-4	1,325	1,222
Current St. John's Temperature & Windchill:	-7 °C	-14 °C	Saturday, March 20, 2021	-6	-4	1,255	1,152
7-Day Island Peak Demand Forecast:	1,335	MW	Sunday, March 21, 2021	-4	-3	1,200	1,152

Supply Notes For March 15, 2021

3

- Notes:
1. Generation outages for running and corrective maintenance are included. These are not unusual for power system operations. They generally do not impact customer supply. The power system operators schedule outages to system equipment whenever possible to coincide with periods when customer demands are low and sufficient supply reserves are available. However, from time to time equipment outages are necessary and reserves may be impacted.
 2. Due to the Island system having no synchronous connections to the larger North American grid, when there is a sudden loss of large generating units there may be a requirement for some customer's load to be interrupted for short periods to bring generation output equal to customer demand. This automatic action of power system protection, referred to as under frequency load shedding (UFLS), is necessary to ensure the integrity and reliability of system equipment. Under frequency events have typically occurred 5 to 8 times per year on the Island Interconnected System and the resultant customer load interruptions are generally less than 30 minutes. With the activation of the Maritime Link frequency controller during the winter of 2018, UFLS events have occurred less frequently.
 3. As of 0800 Hours.
 4. Gross output including station service at Holyrood (24.5 MW) and improved NLH hydraulic output due to water levels (35 MW).
 5. Gross output from all Island sources (including Note 4).
 6. NLH Island Power Purchases include: CBPP Co-Gen, Nalcor Exploits, Rattle Brook, Star Lake, Wind Generation and capacity assistance (when applicable).
 7. Adjusted for curtailable load, market activities and the impact of voltage reduction when applicable.

Section 3 Island Peak Demand Information Previous Day Actual Peak and Current Day Forecast Peak

Sun, Mar 14, 2021	Actual Island Peak Demand ⁸	20:05	1,191 MW
Mon, Mar 15, 2021	Forecast Island Peak Demand		1,305 MW

Notes: 8. Island Demand / LIL / ML Exports (where applicable) is supplied by NLH generation and purchases, plus generation owned and operated by Newfoundland Power and Corner Brook Pulp & Paper (Deer Lake Power, DLP).